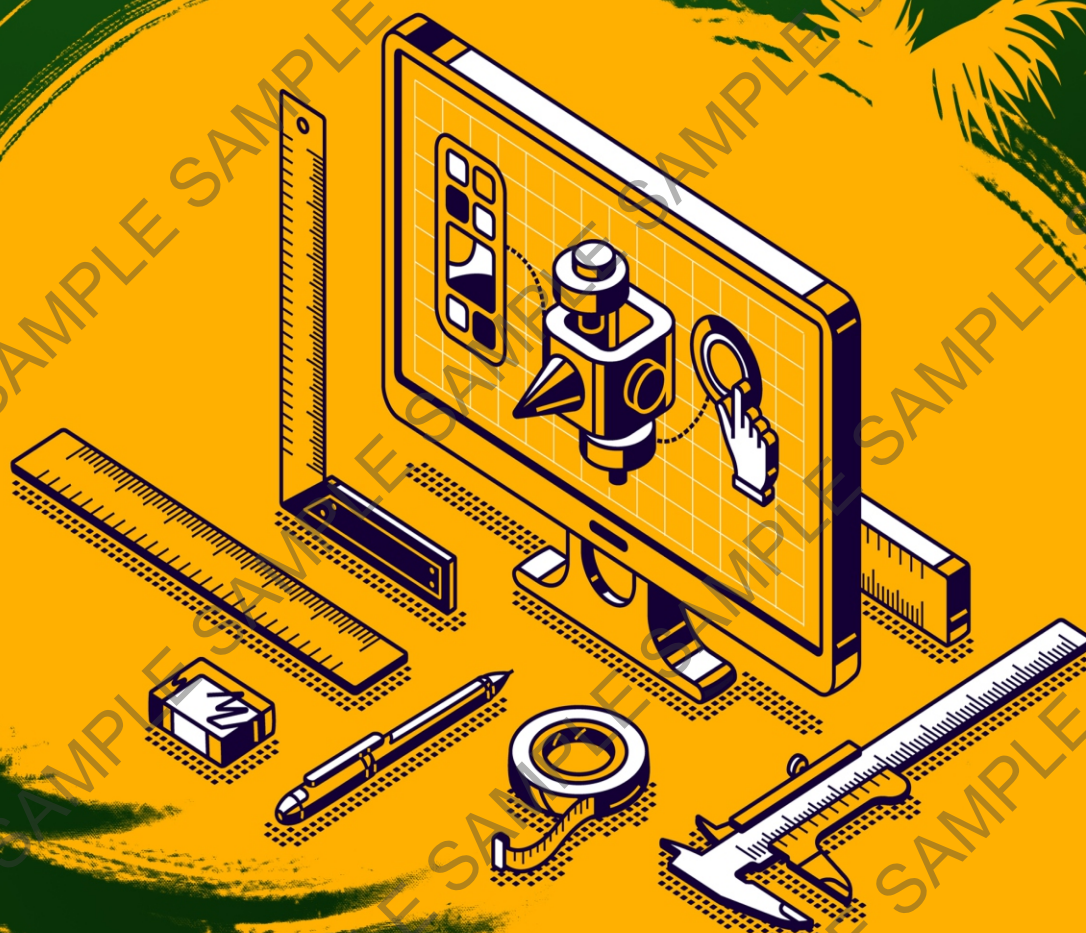


LEVEL 12

LEARNING



Percentages and Measurement

Published by
Color Pencil®

About the book

Vedic Math influenced math learning and activities. More than 1700% times faster than regular Math. It enhances in sharpening the mind, increases mental agility and intelligence. Increases speed and accuracy. It improves memory and boosts self-confidence. It helps in developing the left and right sides of the brain. Easy to master and apply.

Copyright © 2020 by ColorPencil

ISBN: Hardback: 978-1-63649-453-1

All rights reserved. No part of this book may be reproduced or transmitted in any form or by any means, electronic or mechanical, including photocopying, recording, or by any information storage and retrieval system, without permission in writing from the copyright owner.

Print information available on the last page

Rev. date: 21st September 2020

To order additional copies of this book, contact:



Color Pencil®

www.colorpencil.com

hello@colorpencil.com

Halving in division

Explanation: Divide by 2 is nothing but half of the number and divide by 4 is nothing but half the number twice.

Example: Do division using halving

$$776 \div 2$$

$$\text{Halving of } 776 = 388$$

$$776 \div 2 = 388$$

$$3532 \div 4$$

$$\text{Halving of } 3532 = 1766$$

$$\text{Halving of } 1766 = 883$$

$$3532 \div 4 = 883$$

Exercise 8

Do division using halving

1) $28 \div 2$

2) $156 \div 2$

3) $492 \div 4$

4) $700 \div 4$

5) $962 \div 2$



F) Kilo units to metric units

$$1 \text{ km} = 1000 \text{ m}$$

$$1 \text{ kg} = 1000 \text{ g}$$

$$1 \text{ kl} = 1000 \text{ l}$$

Example : Convert 9.4 kg into grams

$$9.4 \times 1000 = 9400$$

$$9.4 \text{ kg} = 9400 \text{ g}$$

Exercise 13F

Convert into metric units

1) 4 km

2) 3.7 kl

3) 8.5 kg

G) Yards to feet

$$1 \text{ yard} = 3 \text{ feet}$$

Example: Convert 31 yd into feet

$$31 \times 3 = 93$$

$$31 \text{ yd} = 93 \text{ ft}$$

Exercise 13G

Convert into feet

1) 4 yd

2) 7 yd

3) 15 yd

Measurement addition

Explanation : To add any two quantities, it must be in the same unit. First convert into same unit (convert to smaller unit is easier than convert to bigger unit), add, and write the answer with unit.

Example : $3000 \text{ mm} + 5.5 \text{ m}$

Convert 5.5 m into mm

$$5.5 \times 1000 = 5500$$

$$3000 + 5500 = 8500$$

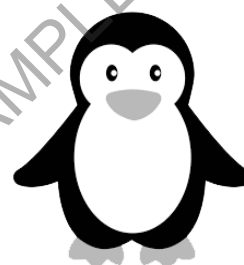
$$3000 \text{ mm} + 5.5 \text{ m} = 8500 \text{ mm}$$

Exercise 16

Convert into same unit and do addition

1) $3 \text{ hrs} + 300 \text{ min}$ 2) $6 \text{ day} + 48 \text{ hrs}$ 3) $30 \text{ cm} + 80 \text{ mm}$

4) $4 \text{ kg} + 5000 \text{ gm}$ 5) $12 \text{ lb} + 816 \text{ oz}$

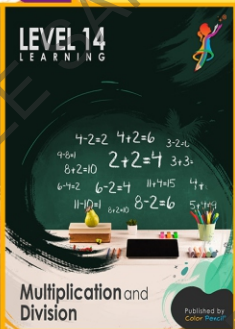
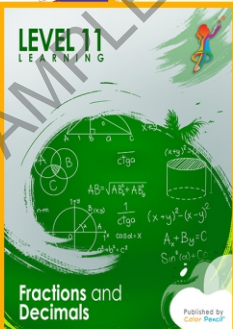
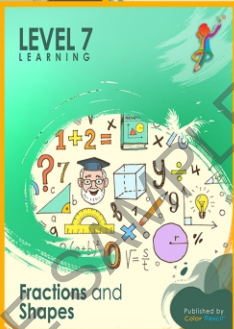
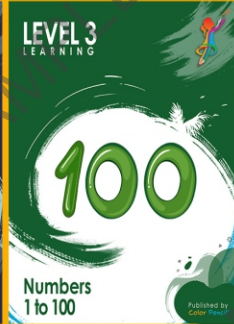
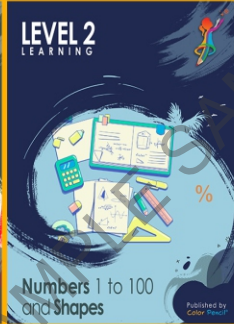
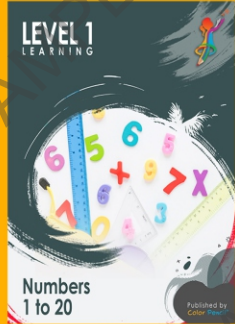


3) $b = 56 \text{ cm}$ $h = 22 \text{ cm}$

4) $b = 42 \text{ cm}$ $h = 99 \text{ cm}$

5) $b = 83 \text{ m}$ $h = 62 \text{ m}$





www.colorpencil.com

Published by
Color Pencil®

